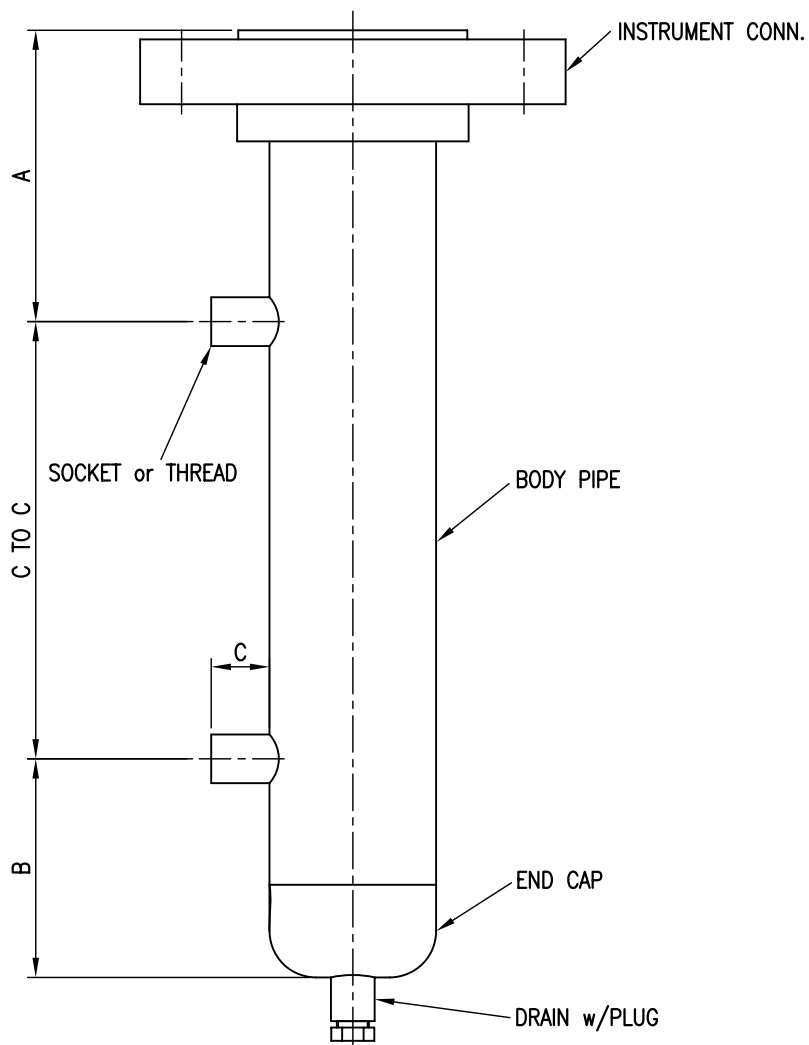
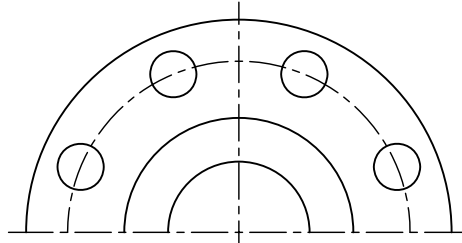



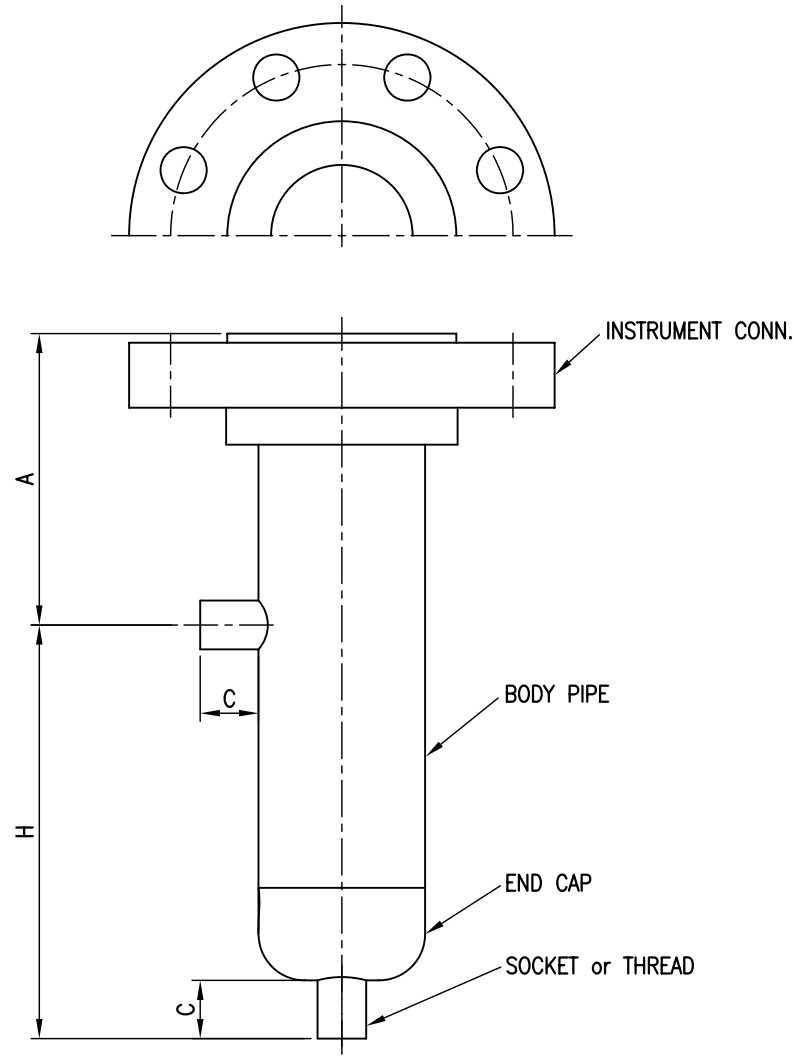
- Chamber Size : 4"
- Rating : ASME Class 900
- Conn. Type : Socket or Thread
- Process Conn. Orientation : Side and Side



NOTE
 1. GENERAL TOLERANCE $\pm 3\text{mm}$ EXCEPT AS NOTED.
 2. FLANGE SHALL BE IN ACCORDANCE WITH ASME B16.5

<table border="1"> <tr><td>△</td><td>.</td><td>.</td><td></td><td></td><td></td></tr> <tr><td>△</td><td>.</td><td>.</td><td></td><td></td><td></td></tr> <tr><td>△</td><td>.</td><td>.</td><td></td><td></td><td></td></tr> <tr><td>△</td><td>.</td><td>.</td><td></td><td></td><td></td></tr> <tr><td>△</td><td>2013.09.11</td><td></td><td></td><td></td><td></td></tr> </table>	△	.	.				△	.	.				△	.	.				△	.	.				△	2013.09.11					 HITROL CO., LTD.					SCALE N.S	UNIT mm	SHEET NO. /
	△	.	.																																			
	△	.	.																																			
	△	.	.																																			
	△	.	.																																			
△	2013.09.11																																					
TITLE						PROJECT																																
EXTERNAL CHAMBER HC-4900-S																																						
NO.	DATE	REVISION	REV'D BY	CHK'D BY	APP'D BY	DRAWING NO. HC4900S-GA-001																																

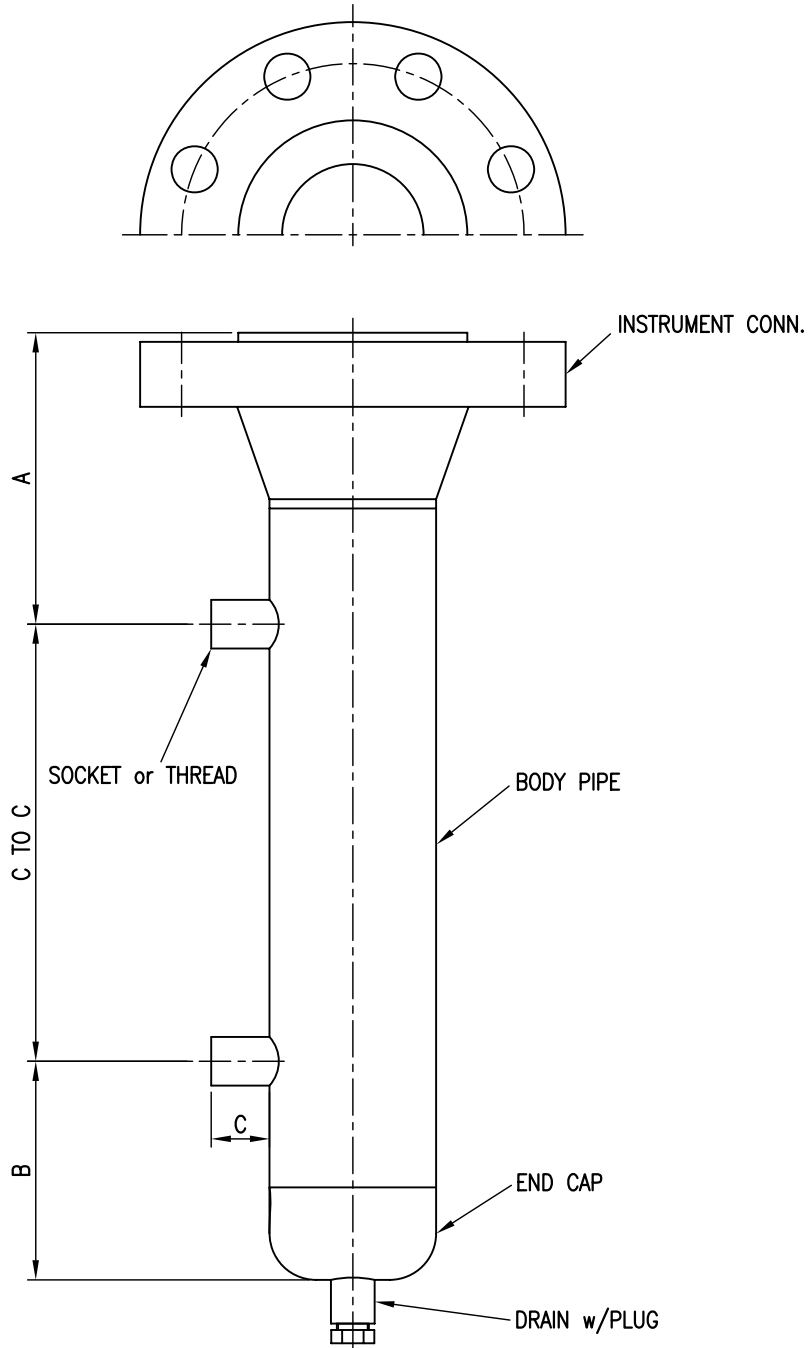
- Chamber Size : 4"
- Rating : ASME Class 900
- Conn. Type : Socket or Thread
- Process Conn. Orientation : Side and Bottom



NOTE
 1. GENERAL TOLERANCE $\pm 3\text{mm}$ EXCEPT AS NOTED.
 2. FLANGE SHALL BE IN ACCORDANCE WITH ASME B16.5

△ △ △ △ △	. .					HITROL CO., LTD. TITLE EXTERNAL CHAMBER HC-4900-S	SCALE	UNIT	SHEET NO.
	. .						N.S	mm	/
	. .						PROJECT		
	. .						DRAWING NO.		
	2013.09.11						HC4900S-GA-002		
NO.	DATE	REVISION	REV'D BY	CHK'D BY	APP'D BY				

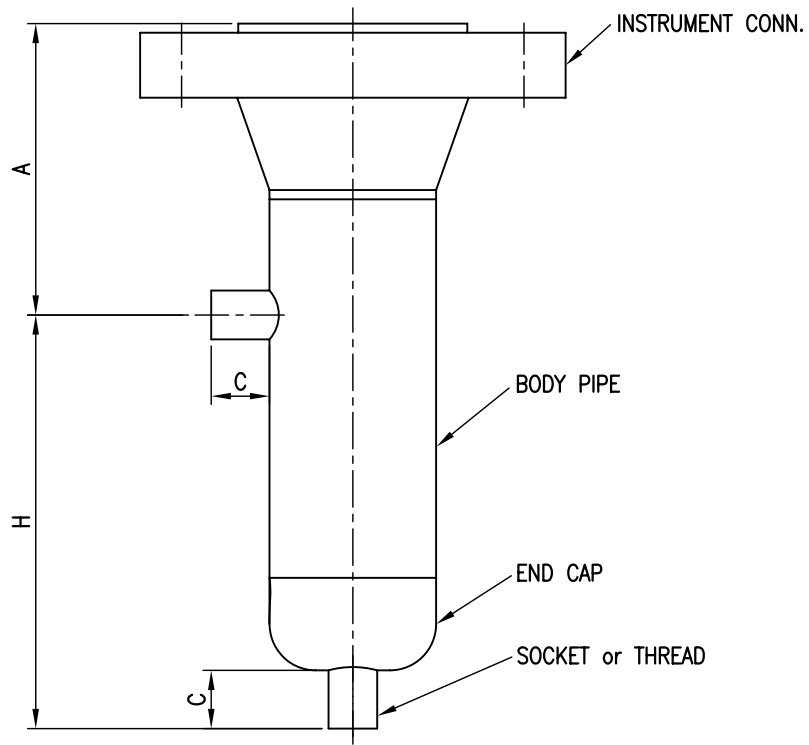
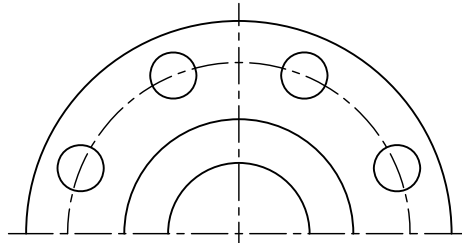
- Chamber Size : 4"
- Rating : ASME Class 900
- Conn. Type : Socket or Thread
- Process Conn. Orientation : Side and Side



NOTE
 1. GENERAL TOLERANCE $\pm 3\text{mm}$ EXCEPT AS NOTED.
 2. FLANGE SHALL BE IN ACCORDANCE WITH ASME B16.5

	.	.				HITROL CO., LTD. TITLE EXTERNAL CHAMBER HC-4900-S	SCALE	UNIT	SHEET NO.
	.	.					N.S	mm	/
	.	.					PROJECT		
	.	.					DRAWING NO.		
	2013.09.11						HC4900S-GA-003		
NO.	DATE	REVISION	REV'D BY	CHK'D BY	APP'D BY				

- Chamber Size : 4"
- Rating : ASME Class 900
- Conn. Type : Socket or Thread
- Process Conn. Orientation : Side and Bottom



NOTE
 1. GENERAL TOLERANCE $\pm 3\text{mm}$ EXCEPT AS NOTED.
 2. FLANGE SHALL BE IN ACCORDANCE WITH ASME B16.5

<table border="1"> <tr><td>△</td><td>.</td><td>.</td><td></td><td></td><td></td><td></td></tr> <tr><td>△</td><td>.</td><td>.</td><td></td><td></td><td></td><td></td></tr> <tr><td>△</td><td>.</td><td>.</td><td></td><td></td><td></td><td></td></tr> <tr><td>△</td><td>.</td><td>.</td><td></td><td></td><td></td><td></td></tr> <tr><td>△</td><td>2013.09.11</td><td></td><td></td><td></td><td></td><td></td></tr> </table>	△	.	.					△	.	.					△	.	.					△	.	.					△	2013.09.11						HITROL CO., LTD.						SCALE N.S	UNIT mm	SHEET NO. /
	△	.	.																																									
	△	.	.																																									
	△	.	.																																									
	△	.	.																																									
△	2013.09.11																																											
TITLE							PROJECT																																					
EXTERNAL CHAMBER HC-4900-S																																												
							DRAWING NO. HC4900S-GA-004																																					
NO.	DATE	REVISION	REV'D BY	CHK'D BY	APP'D BY																																							