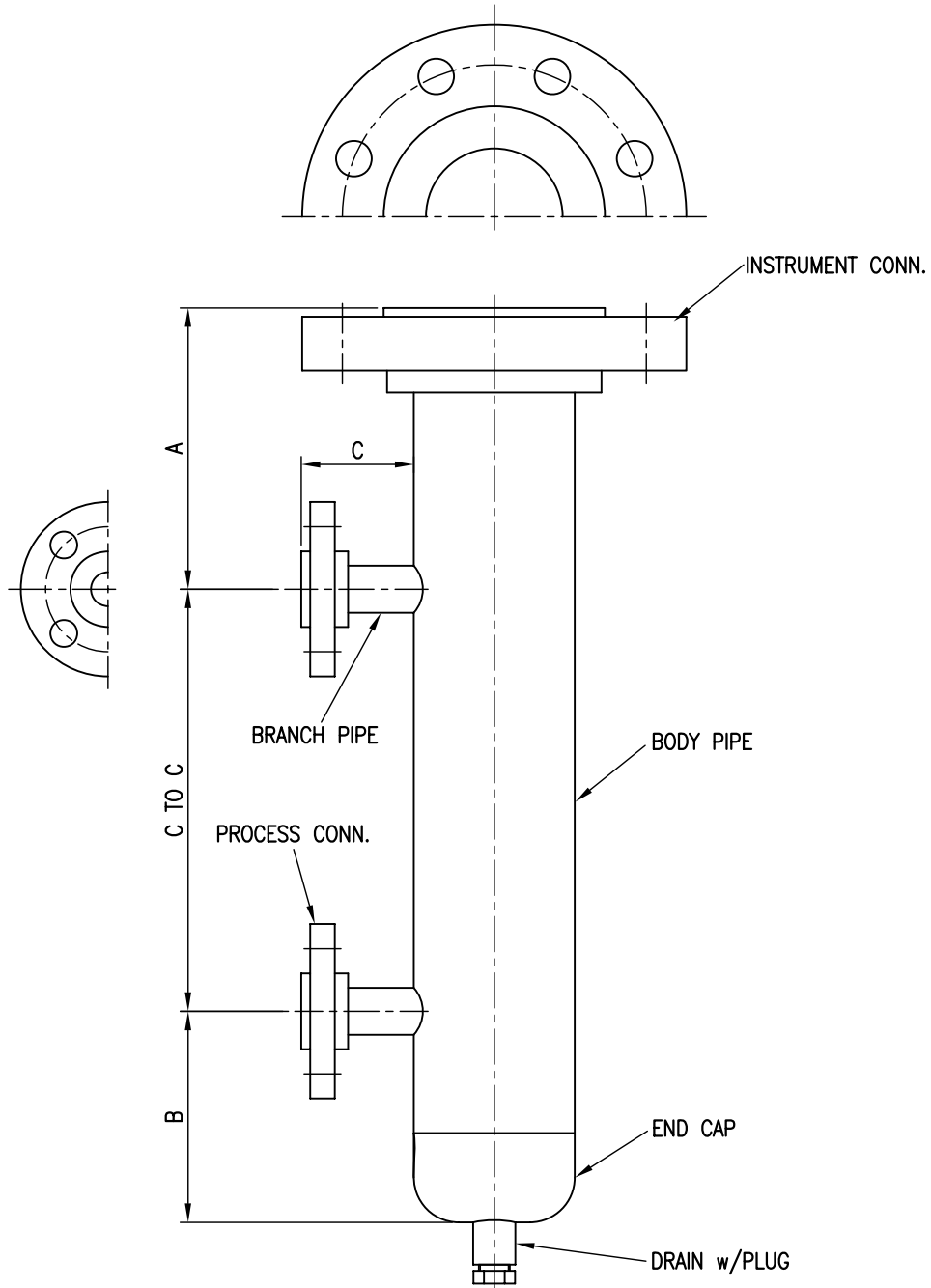


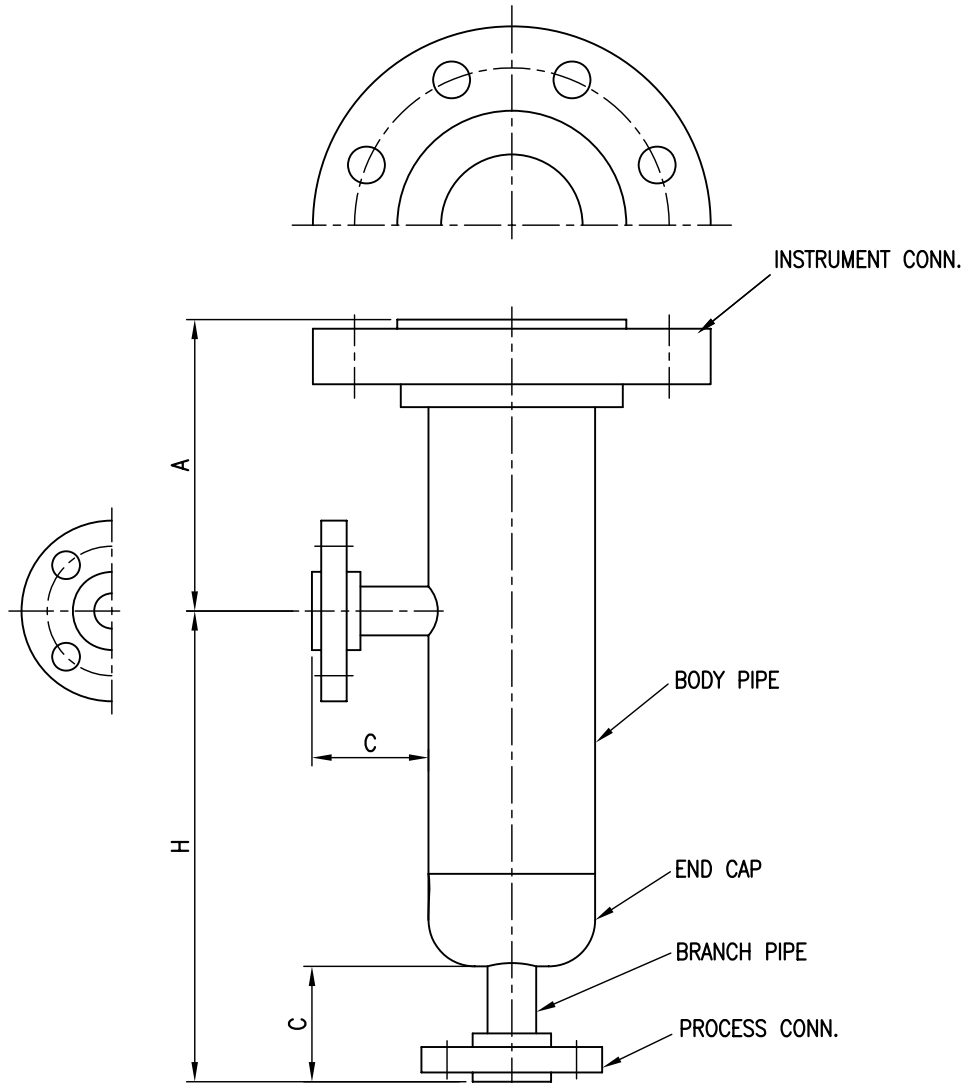
- Chamber Size : 4"
- Rating : ASME Class 600
- Conn. Type : RFSO Flange
- Process Conn. Orientation : Side and Side



**NOTE**  
 1. GENERAL TOLERANCE  $\pm 3\text{mm}$  EXCEPT AS NOTED.  
 2. FLANGE SHALL BE IN ACCORDANCE WITH ASME B16.5

△ △ △ △ △	. .					<b>HITROL CO., LTD.</b>  TITLE  <b>EXTERNAL CHAMBER</b> <b>HC-4600-F</b>	SCALE	UNIT	SHEET NO.	
	. .						N.S	mm	/	
	. .						PROJECT			
	. .						DRAWING NO.			
	2013.09.11							HC4600F-GA-001		
NO.	DATE	REVISION	REV'D BY	CHK'D BY	APP'D BY					

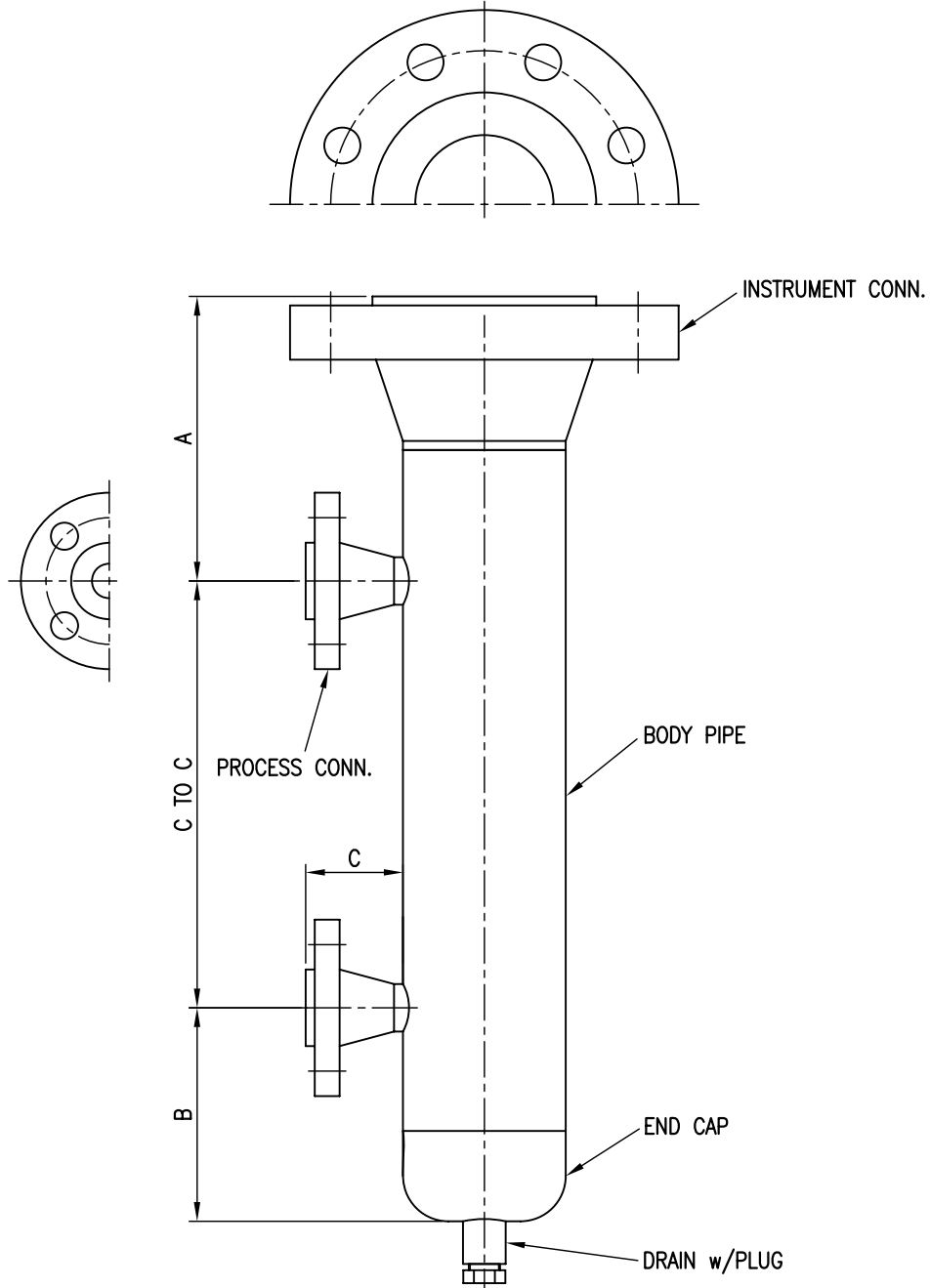
- Chamber Size : 4"
- Rating : ASME Class 600
- Conn. Type : RFSO Flange
- Process Conn. Orientation : Side and Bottom



**NOTE**  
 1. GENERAL TOLERANCE  $\pm 3\text{mm}$  EXCEPT AS NOTED.  
 2. FLANGE SHALL BE IN ACCORDANCE WITH ASME B16.5

<table border="1"> <tr><td>⚠</td><td>.</td><td>.</td><td></td><td></td><td></td></tr> <tr><td>⚠</td><td>.</td><td>.</td><td></td><td></td><td></td></tr> <tr><td>⚠</td><td>.</td><td>.</td><td></td><td></td><td></td></tr> <tr><td>⚠</td><td>.</td><td>.</td><td></td><td></td><td></td></tr> <tr><td>⚠</td><td>2013.09.11</td><td></td><td></td><td></td><td></td></tr> </table>	⚠	.	.				⚠	.	.				⚠	.	.				⚠	.	.				⚠	2013.09.11					<b>HITROL CO., LTD.</b>					SCALE N.S	UNIT mm	SHEET NO. /
	⚠	.	.																																			
	⚠	.	.																																			
	⚠	.	.																																			
	⚠	.	.																																			
⚠	2013.09.11																																					
TITLE					PROJECT																																	
<b>EXTERNAL CHAMBER</b>					DRAWING NO. HC4600F-GA-002																																	
<b>HC-4600-F</b>																																						
NO.	DATE	REVISION	REV'D BY	CHK'D BY	APP'D BY																																	

- Chamber Size : 4"
- Rating : ASME Class 600
- Conn. Type : RFWN Flange
- Process Conn. Orientation : Side and Side

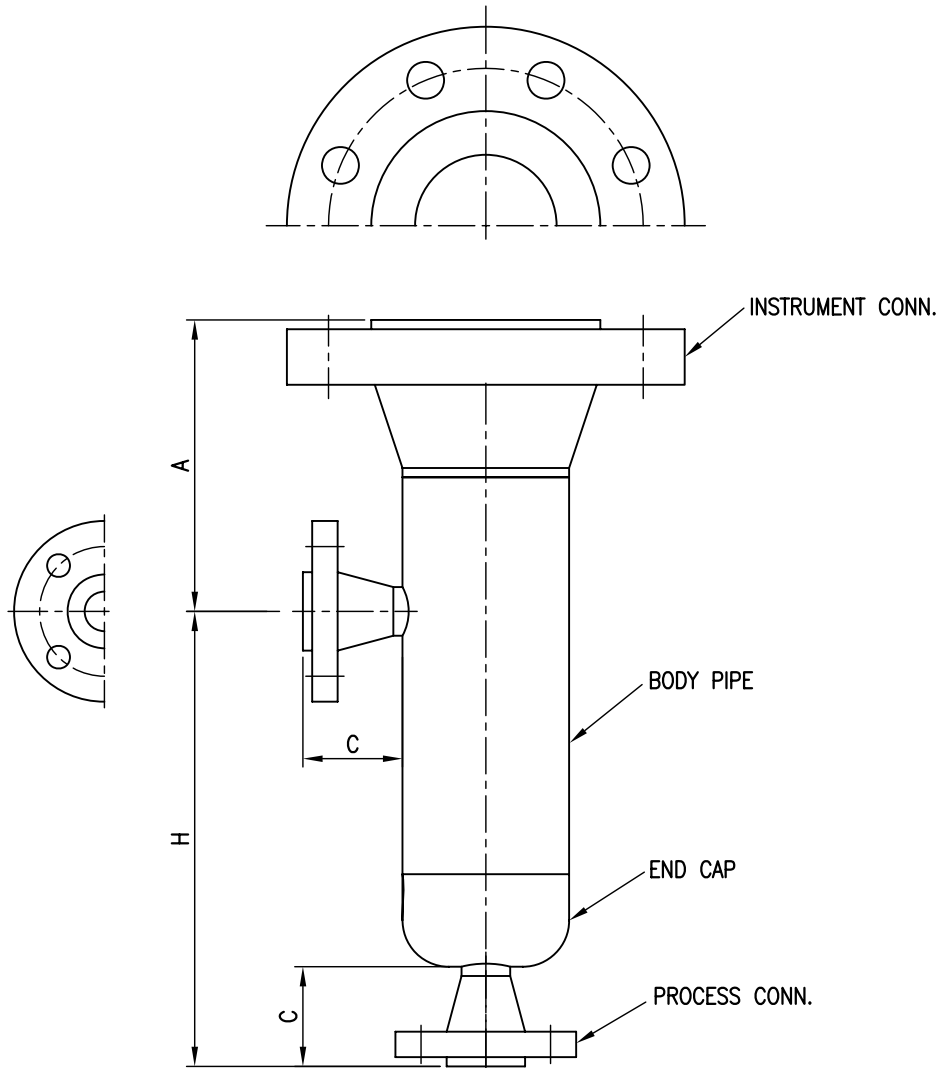


**NOTE**

1. GENERAL TOLERANCE  $\pm 3\text{mm}$  EXCEPT AS NOTED.
2. FLANGE SHALL BE IN ACCORDANCE WITH ASME B16.5

<table border="1"> <tr><td>△</td><td>.</td><td>.</td><td></td><td></td><td></td></tr> <tr><td>△</td><td>.</td><td>.</td><td></td><td></td><td></td></tr> <tr><td>△</td><td>.</td><td>.</td><td></td><td></td><td></td></tr> <tr><td>△</td><td>.</td><td>.</td><td></td><td></td><td></td></tr> <tr><td>△</td><td>2013.09.11</td><td></td><td></td><td></td><td></td></tr> </table>	△	.	.				△	.	.				△	.	.				△	.	.				△	2013.09.11					<b>HITROL CO., LTD.</b>				SCALE N.S	UNIT mm	SHEET NO. /
	△	.	.																																		
	△	.	.																																		
	△	.	.																																		
	△	.	.																																		
△	2013.09.11																																				
TITLE						PROJECT																															
<b>EXTERNAL CHAMBER</b>						DRAWING NO.																															
<b>HC-4600-F</b>						HC4600F-GA-003																															
NO.	DATE	REVISION	REV'D BY	CHK'D BY	APP'D BY																																

- Chamber Size : 4"
- Rating : ASME Class 600
- Conn. Type : RFWN Flange
- Process Conn. Orientation : Side and Bottom



**NOTE**

1. GENERAL TOLERANCE  $\pm 3\text{mm}$  EXCEPT AS NOTED.
2. FLANGE SHALL BE IN ACCORDANCE WITH ASME B16.5

	. .					<b>HITROL CO., LTD.</b>	SCALE	UNIT	SHEET NO.	
	. .						N.S	mm	/	
	. .						TITLE	PROJECT		
	. .						<b>EXTERNAL CHAMBER</b>	DRAWING NO.		
	<b>2013.09.11</b>						<b>HC-4600-F</b>	<b>HC4600F-GA-004</b>		
<b>NO.</b>	<b>DATE</b>	<b>REVISION</b>	<b>REV'D BY</b>	<b>CHK'D BY</b>	<b>APP'D BY</b>					