

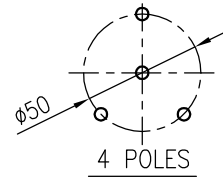
FOR	ELECTRODE TYPE LEVEL SENSOR	
MOUNTING	TOP FLANGE	
ENCLOSURE	WEATHER PROOF (IP65)	
MAX. PRESSURE	10	kgf/cm
MAX. TEMP	350	°C

CABLE ENTRY	PF 3/4"(F)
	<input type="checkbox"/>

NO.	DESCRIPTION	MATERIAL	REMARK
1	HOUSING	AL.C	
2	PROCESS CONN.	304 SS	
3	INSULATION	CERAMIC	
4	ELECTRODE	316L SS	φ6
5	GROUND ELECTRODE	316L SS	
6	COOLING FIN	304 SS	

PROCESS CONN. SIZE					
<input type="checkbox"/>	100A JIS 10K RF				
<input type="checkbox"/>					

TAG. NO.	Q'TY	L1	L2	L3	L



NOTE
1. GENERAL TOLERANCE : ±5mm EXCEPT AS NOTED.

⚠	.	.			
⚠	.	.			
⚠	.	.			
⚠	.	.			
⚠	Apr. 2018	1ST ISSUE	D Y KIM	B S SUNG	Y H KIM
NO.	DATE	REVISION	REV'D BY	CHK'D BY	APP'D BY

HITROL HITROL CO., LTD.
TITLE
**ELECTRODE TYPE LEVEL SENSOR
HE-4H-S**

SCALE	UNIT	SHEET NO.
N.S	mm	
PROJECT		
DRAWING NO.		
HE4HS-A-01		

This drawing is the property of HITROL and shall not be copied, communicated, or given for third-party permission without our written permission.