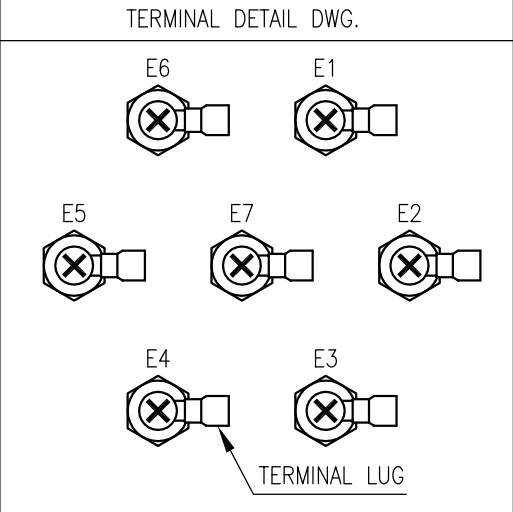


FOR	ELECTRODE TYPE LEVEL SENSOR
MOUNTING	TOP, FLANGE
ENCLOSURE	WEATHER-PROOF (IP54)
MAX. PRESSURE	ATM kgf/cm ²
MAX. TEMP	60 ° C

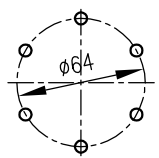
CABLE ENTRY	20A Hole
	<input type="checkbox"/>

NO.	DESCRIPTION	MATERIAL	REMARK
1	HOUSING	C.S	
2	PROCESS CONN.	ABS	
3	JOINT	316 SS	
4	INSULATION	PP	
5	ELECTRODE	316 SS	

PROCESS CONN. SIZE	
<input type="checkbox"/>	100A JIS 10K FF
<input type="checkbox"/>	



TAG. NO.	QTY	L1	L2	L3	L4	L5	L6	L



NOTE
1. GENERAL TOLERANCE : ±3 EXCEPT AS NOTED.

	..					HITROL CO., LTD.	SCALE	UNIT	SHEET NO.	
	..						N.S	mm	/	
	..						TITLE	PROJECT		
	..						ELECTRODE TYPE LEVEL SENSOR	DRAWING NO.		
	Apr. 2018	1ST ISSUE	D Y KIM	B S SUNG	Y H KIM		HE-7V	HE7V-A-01		
NO.	DATE	REVISION	REV'D BY	CHK'D BY	APP'D BY					

This drawing is the property of HITROL and shall not be copied, communicated, or given for third-party permission except with our written permission