

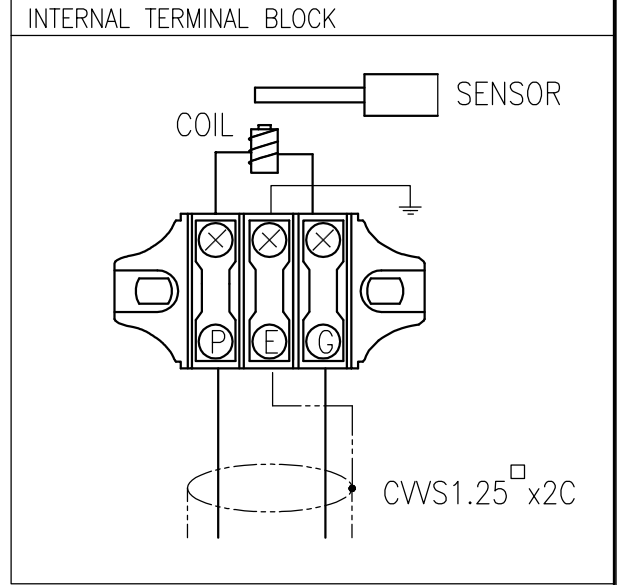
P0	TN
----	----

FOR	LEVEL POINT SENSOR
MOUNTING METHOD	TOP or SIDE, SCREW
MAX. PRESS.	10 Kg/cm ²
TEMP. AMP.:	-20 ~ +60 °C PROBE: MAX. 80°C
POWER SOURCE	AC 110/220V 60Hz
CONTACT CAPACITY	AC 250V 5A

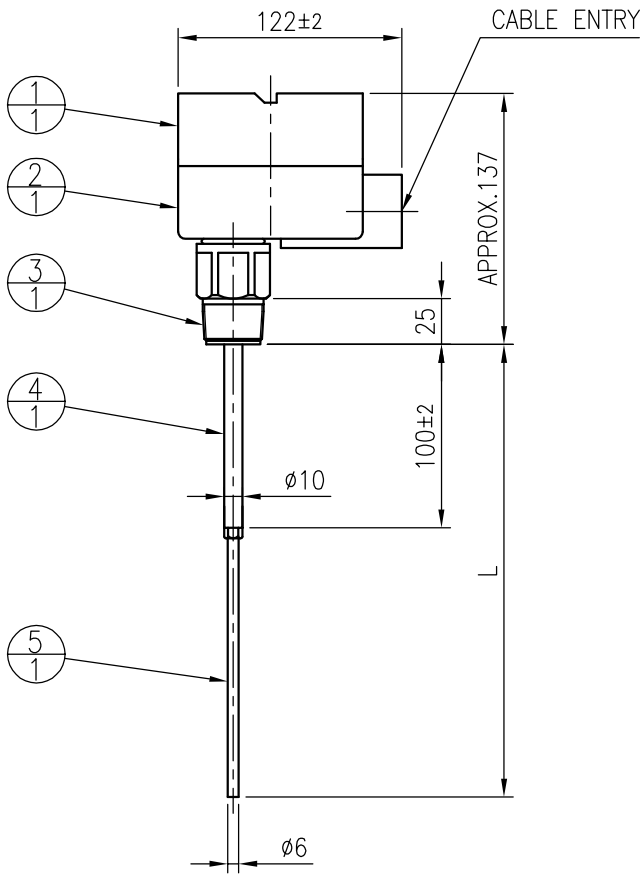
CABLE ENTRY	PF 1/2"(F)
	<input type="checkbox"/>

NO.	DESCRIPTION	MATERIAL	REMARK
1	COVER	GC 200	
2	BASE	GC 200	
3	CONNECTOR	316L SS	
4	SENSOR ROD	316L SS	ø10
5	EXTENSION ROD	316L SS	ø6

PROCESS CONN.	
<input type="checkbox"/>	PT 1"(M) SCREW
<input type="checkbox"/>	



TAG. NO	L



NOTE
1. GENERAL TOLERANCE ±3mm EXCEPT AS NOTED.

△	.	.			
△	.	.			
△	.	.			
△	.	.			
△	MAY. 2018	1st ISSUE	D Y KIM	B S SUNG	Y H KIM
NO.	DATE	REVISION	REV'D BY	CHK'D BY	APP'D BY

HITROL HITROL CO., LTD.
TITLE
VIBRATION TYPE LEVEL SWITCH
HTM-920

SCALE	UNIT	SHEET NO.
N.S	mm	/
PROJECT		
DRAWING NO.		
HTM920-A-01		

A4(210mm x 297mm)

This drawing is the property of HITROL and shall not be copied, communicated, or given for third-party permission without our written permission.